



Scoot'elec

TECHNICAL NETWORK LEADERSHIP

## Datasheet

Reference : 755863

### GENERAL CHARACTERISTICS :

#### SPECIFICATIONS :

Company name : Scoot'elec

Mines type\*\* : E1A

(\*\*official French body responsible for regulating weights and measures and changes made to motor vehicles).

#### DIMENSIONS (in mm) :

Length : 1755

Width : 695

Height (without rear-view mirrors) : 1100

Ground clearance : \*

Wheel base : 1300

#### WEIGHT (in kg) :

Laden weight : 115

#### STEERING :

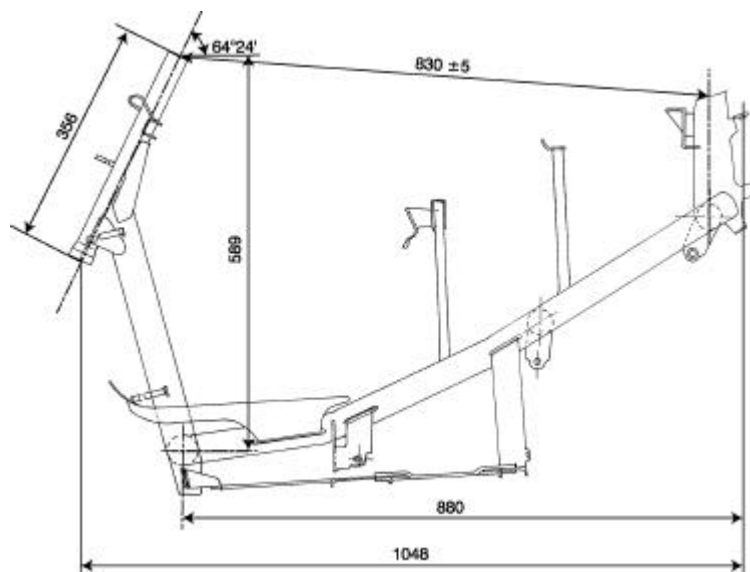
Steering column mounted with ball-bearing cone and cup.

#### CAPACITIES (in litres) and RECOMMENDATIONS :

3 litres of demineralised water for start-up and battery maintenance.

Use PEUGEOT demineralised water only (reference : 973582).

Relay box : 0.12 L.SAE 75W – 80W



\* : Not completed

#### COOLING :

By air circulation forced by a turbine fixed on the right axle of the rotor.

#### ENGINE :

Direct current and separated excitation.

Make : SCHABMÜLLER

Max power : 2,8 kW

Max power rating : 2100 rpm

Max torque rating : constant max torque from 0 to 2000 rpm

Engine brake with energy regenerator.

#### TRANSMISSION :

With 2 fast pulleys and notched belt.

#### RELAY BOX :

By shaft and pinions. Simple set of pinions.

Teeth set : helical

#### SUSPENSION :

Front suspension type : telescopic fork

Travel : 76,5 mm

Rear suspension type : combined hydraulic spring-shock absorber

Travel : 65 mm

#### FRONT BRAKE :

Single cam drum type controlled by cable.

Brake drum diameter : 110 mm

Brake lining thickness : 4 mm

#### REAR BRAKE :

Single cam drum type controlled by cable.

Brake drum diameter : 110 mm

Brake lining thickness : 4 mm

#### WHEELS AND TYRES :

Integral aluminium wheels and tubeless tyres.

|                    | Front       | Rear         |
|--------------------|-------------|--------------|
| Rim dimensions :   | 2,5 "x 10 " | 2,5 "x 10 "  |
| Tyres dimensions : | 100/80 x 10 | 110/80 x 100 |
| Pressures (bar) :  | 2,5         | 2,5          |
| Max wheel disc :   | 0,8 mm      | 0,8 mm       |
| Balance :          | *           | *            |

### TIGHTENING TORQUES (Nm) :

#### ENGINE:

Engine carter : 8 to 12

#### CYCLE PART :

Engine mounting on connecting rod : 19 to 28

Front wheel : 60 à 70

Upper nut on the steering column : 60 to 80

Rear wheel : 100 to 120

Shock-absorber mounting, rear, upper : 40 to 45

Inner : 20 to 25

### AUTONOMY AND LOADING TIME :

Autonomy of 45 km at a speed stabilized at 45 km/h

Complete loading time : 5 hours

Loading time at 95 % : 2 hours

Partial loading time 10 min = 5,5 km in ECO mode

ELECTRICAL EQUIPMENT :

Battery : 3 Cadmium-Nickel monoblocs. 6V 100 Ah mounted in series.

Make : SAFT

Total management of the vehicle by the electronic command unit (ECU)

Make : VESTALE

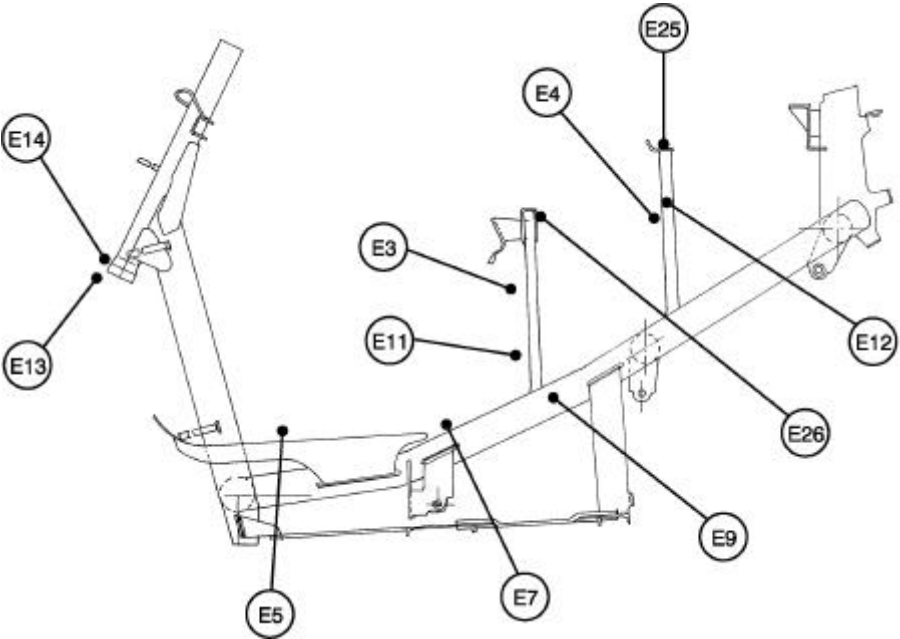
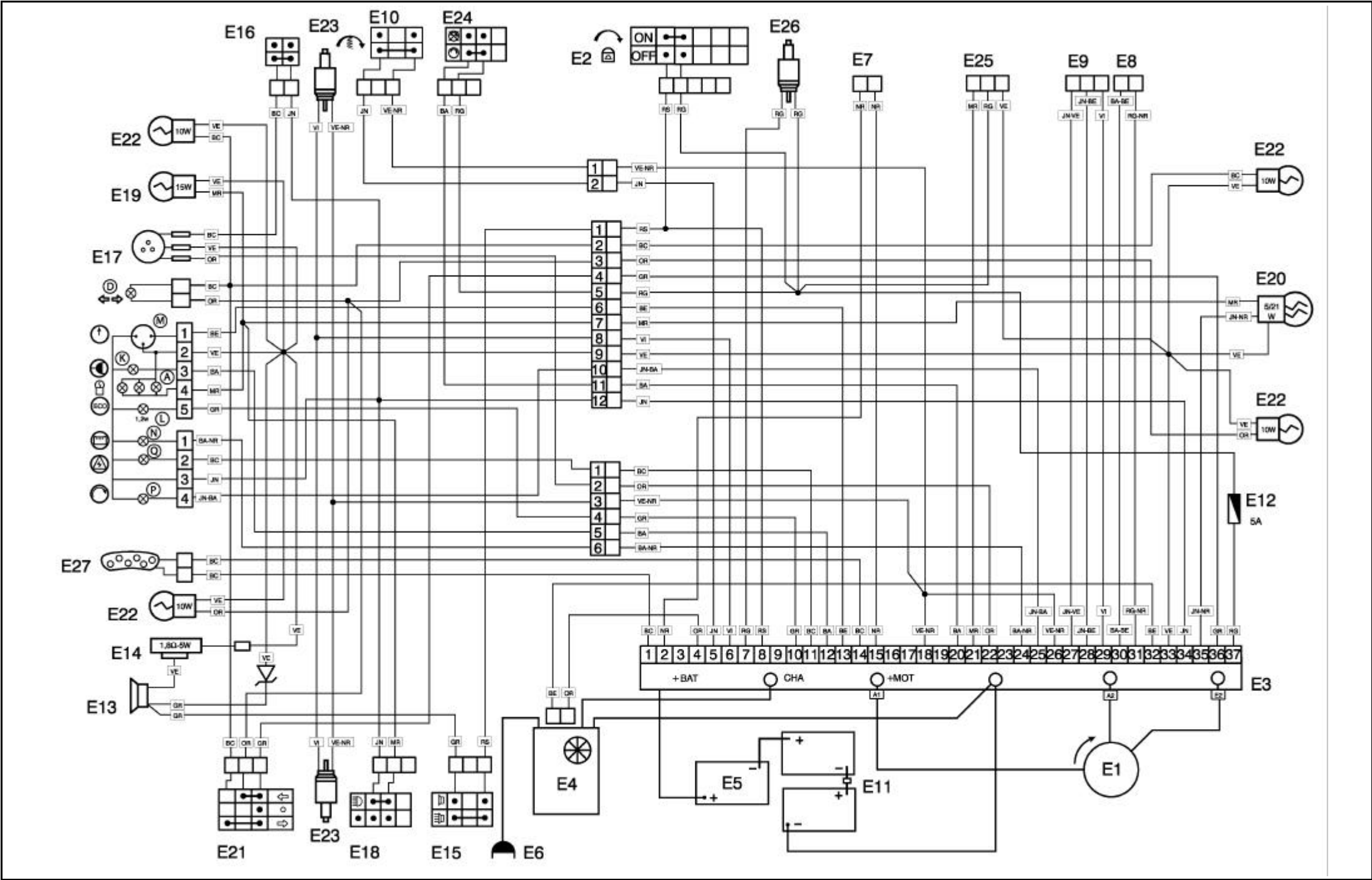
Embedded charger : 1300 W

Max consumption : 7A

Make : OPTELEC

LIGHTING AND FUSES :

|                                    | Quantity | Power        |
|------------------------------------|----------|--------------|
| Headlamp (code light) :            | 1        | 12V – 15W    |
| Red stop lamp :                    | 1        | 12V – 21/5 W |
| Indicator lamps :                  | 4        | 12V – 10W    |
| Number plate lightning :           | *        | *            |
| Dash board lighting :              | 3        | 12V – 1,2W   |
| Instrument panel indicator lamps : | 6        | 12V – 1,2W   |
| Power fuse :                       | 1        | 200 A        |
| Main fuse :                        | 1        | 5 A          |
| Signalling fuse :                  | *        | *            |
| "Side light" bulb :                | *        | *            |



- A Instrument panel lightning
- D Indicator control light
- K Load control
- L Economic mode control
- M Energy gauge
- N Battery maintenance control
- P Running mode control
- Q Defect warning control
- E1) Engine
- E2) Ignition switch
- E3) Electronic command unit (UCE)
- E4) Charger
- E5) Battery
- E6) Load strand
- E7) Temperature sensor
- E8) Speed sensor
- E9) Accelerator sensor

- E10) Running switch
- E11) Fuse 200A
- E12) Fuse 5A
- E13) Horn
- E14) Résistor (in serie with the horn 1.8 -5W)
- E15) Horn switch
- E16) Pedestrian horn contactor
- E17) Pedestrian horn
- E18) Lightning command
- E19) Main beam light
- E20) Stop/tail light
- E21) Indacidor command
- E22) Indicator lights
- E23) Stop contactor
- E24) Safety contact
- E25) Diagnostic plug
- E26) Maintenance hatch contactor
- E27) Keyboard

- BA : White
- BA-BE : White/Blue
- BA-NR : White/Black
- BC : Light blue
- BE : Blue
- GR : Grey
- JN : Yellow
- JN-BA : Yellow/White
- JN-BE : Yellow/Blue
- JN-NR : Yellow/Black
- JN-VE : Yellow/Green
- MR : Brown
- NR : Black
- OR : Orange
- RG : Red
- RG-NR : Red/Black
- RS : Pink
- VE : Green
- VE-NR : Green/Black
- VI : Purple